





ARTIFICIAL INTELLIGENCE (AI) IMPLEMENTATION IN HERNANDO COUNTY SCHOOLS

Hernando County School District
Academic Services Division

Jesse O. Díaz 
Supervisor of Instructional Technology 



WHY ARTIFICIAL INTELLIGENCE (AI) MATTERS IN EDUCATION

WHY AI MATTERS IN EDUCATION



Transformative Learning Potential

AI enables personalized instruction and innovative teaching methods to improve student learning outcomes.

Privacy and Integrity Protection

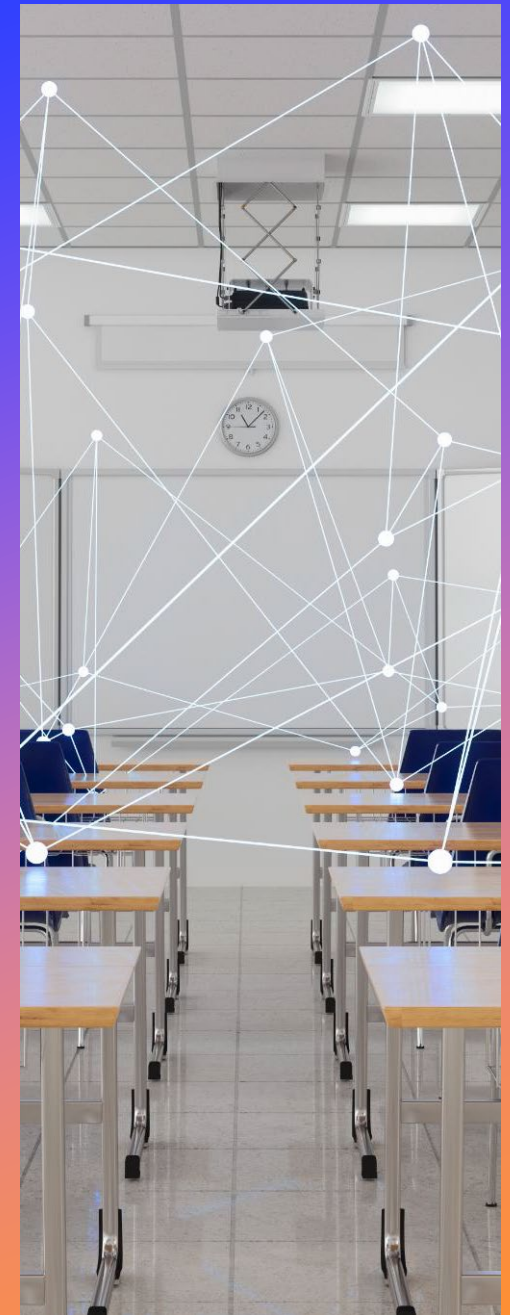
Responsible AI use requires safeguarding student privacy and upholding academic integrity through clear policies.

Strategic Implementation Approach

Hernando County Schools balances caution with innovation by training staff and aligning with state regulations.

Ethical and Compliant Use

AI tools are used ethically to support learning goals, not replace teacher instructional expertise, ensuring compliance and security.





CURRENT AI PLATFORMS AND USAGE

AI TOOLS PROVIDED AND ALLOWED



Staff AI Access

Staff are provided access to **Microsoft 365 Copilot**, **Canva AI**. Teachers serving grades 6-12 also have access to **Khanmigo**.

Student AI Access by Grade

Students' AI access is tiered: grades 9–12 use **M365 Copilot** and **Canva AI**, grades 6–12 can access **Khanmigo**, K–8 can use **Canva AI** under teacher direction.

Privacy and Safety Standards

AI tool usage adheres to district standards protecting Personally Identifiable Information (PII).

Balanced Innovation Approach

The district balances AI innovation with responsibility, ensuring tools support learning without compromising integrity.



DATA PRIVACY AND SECURITY





COMPLIANCE AND AGREEMENTS

Data Privacy Regulations

Compliance with state and federal data privacy laws like 6A-1.0955 and SOPIPA ensures student data protection.

Security Agreements for AI Tools

Platforms like **Canva AI** and **Khanmigo** require signed security and data-privacy agreements to meet compliance standards.

Staff Guidance and Policies

Clear guidelines prohibit entering student data into unapproved online platforms, protecting privacy.



TRAINING AND GUIDANCE



PROFESSIONAL LEARNING AND RESOURCES



Continuous Professional Learning

Ongoing training sessions and workshops focus on AI protocols and best practices for educators.

Ethical AI and Copyright Compliance

Training emphasizes responsible AI use, copyright laws, and strategies to prevent plagiarism in schools.

Empowering Educators with AI

AI education equips teachers to integrate technology effectively, enhancing instruction and accessibility.

Ongoing Updates and Support

Regular updates and resources ensure educators stay informed about emerging AI trends and protocols. (*e.g. Monthly EdTech Newsletter*)



POLICIES AND ACADEMIC INTEGRITY



POLICY 7540.08 ARTIFICIAL INTELLIGENCE (AI)



Policy Compliance and Ethics

All AI use must comply with laws and district policies ensuring ethical and responsible usage in educational settings.

Restricted Student AI Use

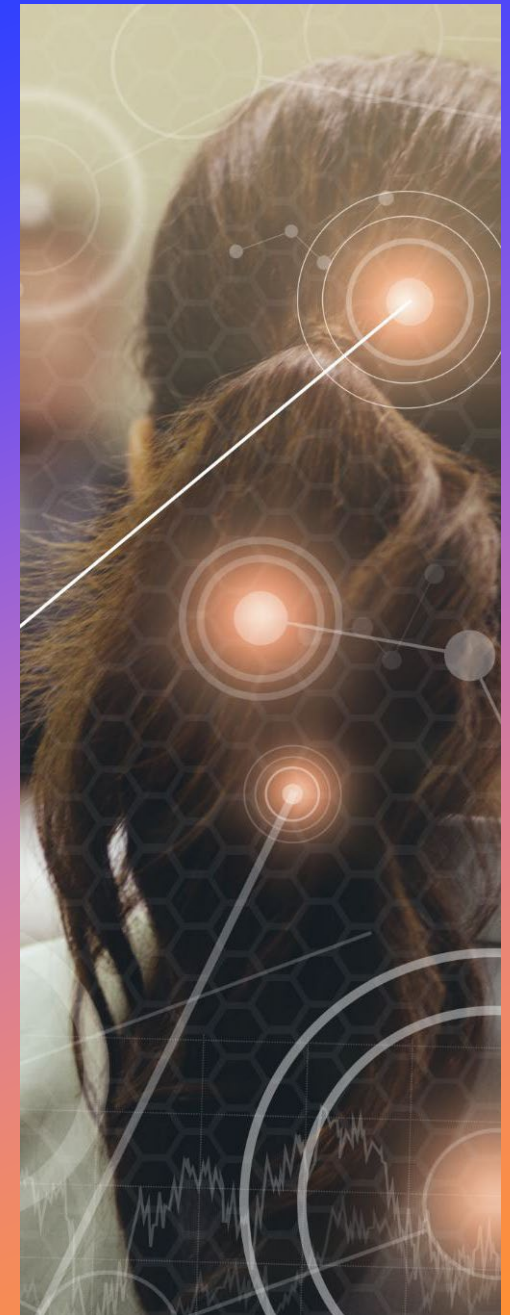
Students are prohibited from using AI tools for schoolwork without teacher consent, preventing plagiarism and ensuring academic honesty.

Authorized Teacher AI Use

Teachers may allow AI for research, data analysis, translation, writing, and accessibility to support learning effectively.

Accountability and Consequences

Violations of AI policy lead to disciplinary actions, reinforcing responsibility for both students and staff.



RISK AWARENESS AND MITIGATION



COPYRIGHT AND LIABILITY CONSIDERATIONS



Copyright Guidance

Staff receive copyright best practices via Board Policy and Digital Citizenship Guidance.

Comprehensive Staff Training

Hernando County Schools provide staff with policies, digital citizenship guidance, and training to ensure ethical content creation.

Data Privacy and Liability Reduction

Teachers are trained to avoid inputting student data into unapproved online platforms/tools, reducing data breach risks and liabilities.

Proactive Risk Management

The district's approach fosters awareness and accountability, minimizing legal risks and ensuring compliance with technology use.



FUTURE-READY LEADERSHIP

STATE-LEVEL ENGAGEMENT AND VISION



Active State Engagement

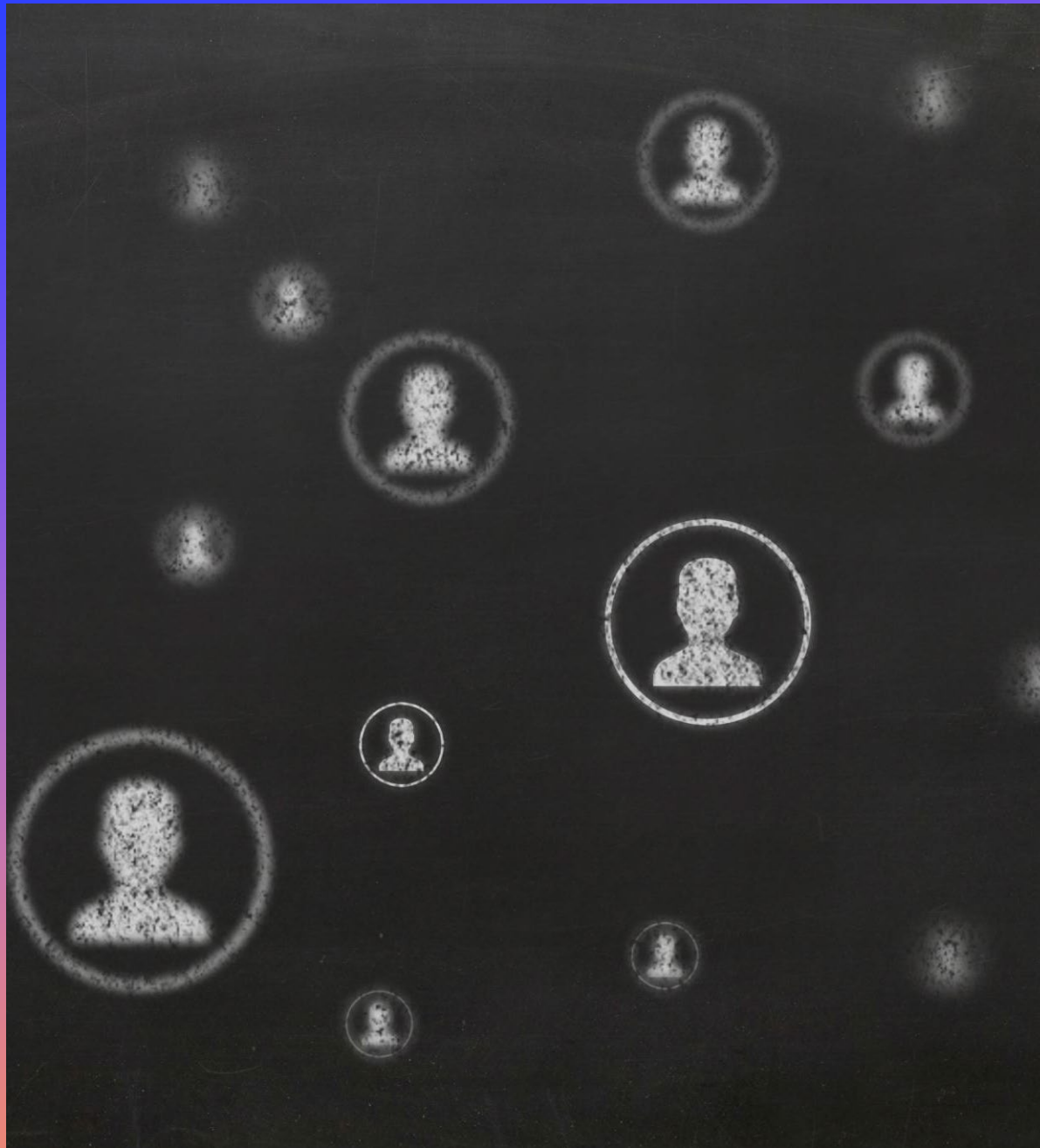
Hernando County Schools participates in Florida's AI Education Task Force to stay updated on guidance and legislation.

Policy Alignment and Advocacy

The district aligns policies with state standards and advocates for resources supporting responsible AI use in education.

Vision for Future Learning

Hernando aims to be a forward-thinking district leveraging technology to improve learning while protecting students and staff.





SUMMARY & NEXT STEPS

SUMMARY AND NEXT STEPS



Responsible AI Implementation

The district has defined approved AI platforms and secured data privacy to ensure responsible use.

Training and Policy Development

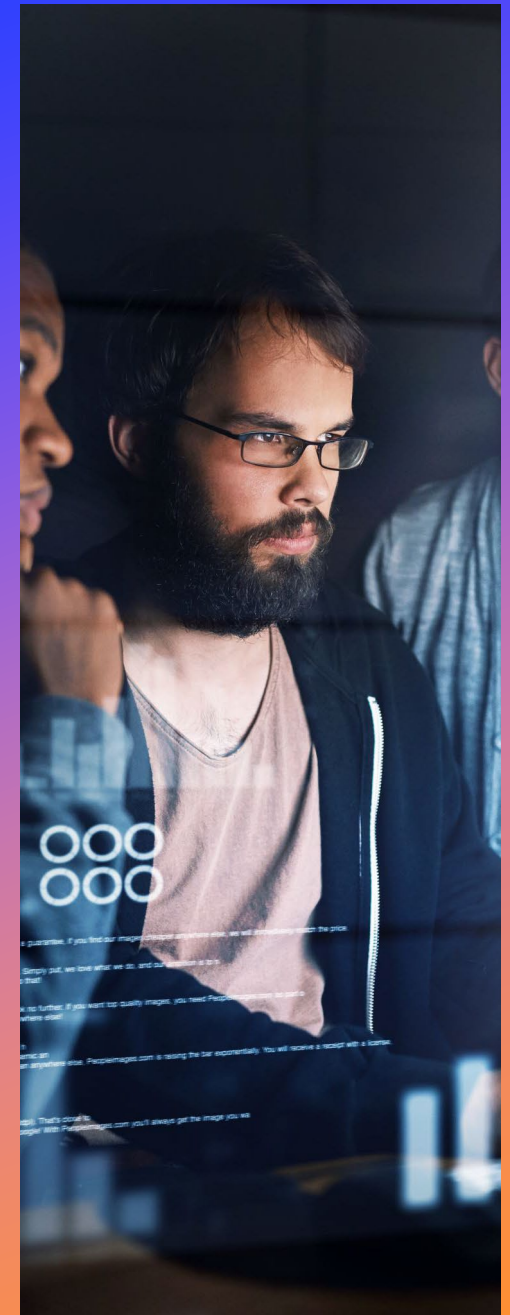
Ongoing training and clear policies support ethical AI use aligned with legal standards.

Risk Mitigation Strategies

Addressing copyright and data security concerns helps mitigate risks in AI adoption.

Future-focused AI Approach

Continuous updates and innovation ensure safe and effective AI integration in education.





THANK YOU!