

# Homework Helpline item #

Student Performance Software

1.22-0621

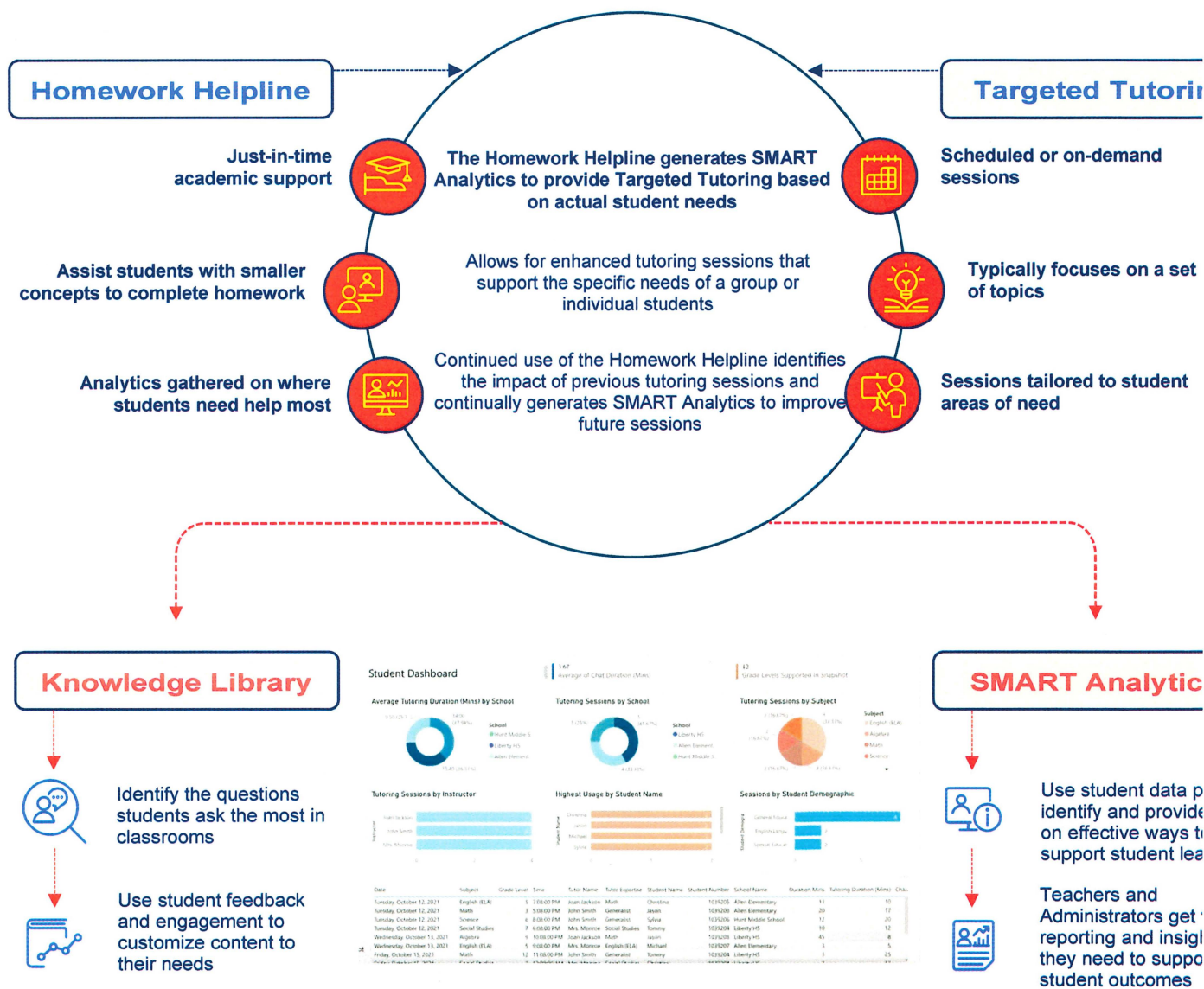
Powered by



## Synergy of the Homework Helpline and Targeted Tutoring

Educators-as-a-Service offers two unique solutions in one platform: the Homework Helpline and Targeted Tutoring. By implementing these solutions together, information from one solution can feed into, inform, and improve aspects of other areas of the platform.

When integrated together, the Homework Helpline and Targeted Tutoring provide a single, holistic solution. Schools can leverage this to establish SMART Tutoring Sessions.



# Homework Helpline

Student Performance Software

Powered by



## Just-in-Time Academic Support

Get the support you need, the way you need it, just in time.

## In-school | Tutoring Sessions

Dive deeper into what you learn in the classroom with live tutoring sessions at school.

## Knowledge Library

Look up solutions and strategies inside this digital library to help you solve questions on your homework.

## Evening Support

Get help with homework in any subject from a real, live tutor.

Catch up on work, explore the Knowledge Library, join a tutoring session, or get a jumpstart on your homework with a live tutor.

Stay connected from home and receive all the support you need at your own pace.

## Study Hall

## Learning from Home

Stay on track even during school breaks by getting support from the Homework Helpline.

## Summer/Winter Break Tutoring Sessions



1

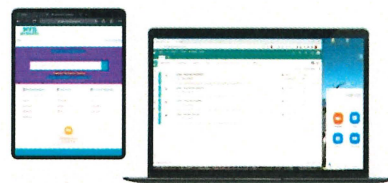
Log In

2

Explore the Knowledge Library

3

Connect with a tutor



## Tutor Support Available:

Monday-Friday: 3pm-11pm

Saturday-Sunday: 10am-10pm



# Targeted Tutoring

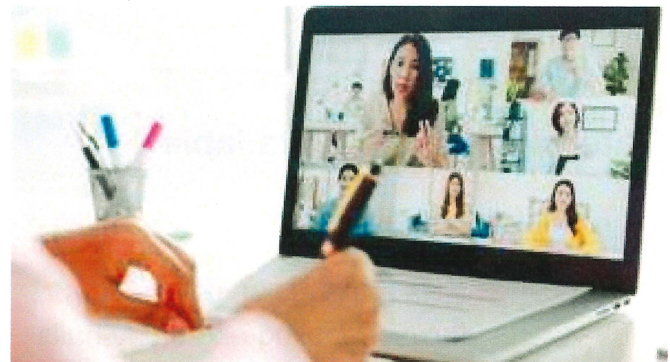
Schedule at Scale

Powered by



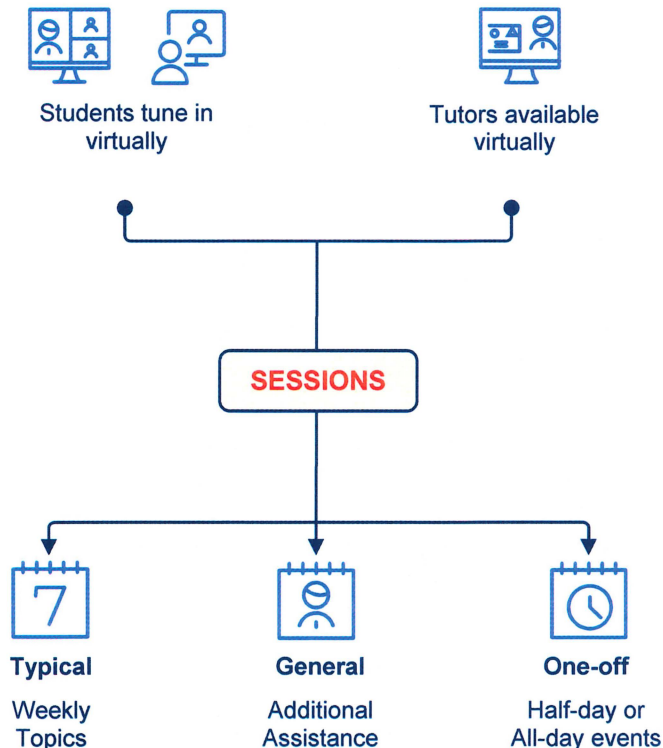
## 1-on-1 Student/Tutor Sessions

Tutoring sessions can have 1:1 tutor/student ratios or up to 1:20, giving your district the capacity and scale to meet student needs.



## Optimal Group Learning Environments

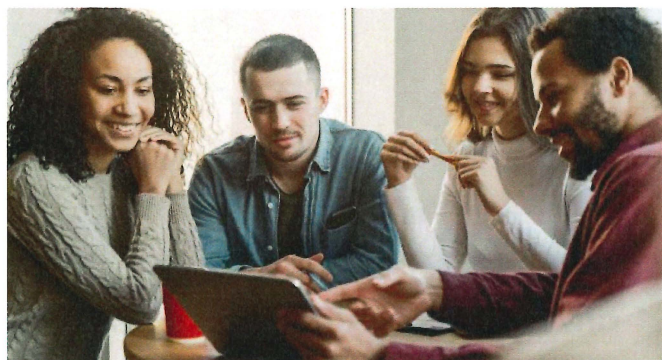
Additional tutoring assistants are assigned to sessions with 5 or more students to lead focused breakout sessions and ensure student questions get answered.



# Targeted Tutoring

Schedule at Scale

Powered by



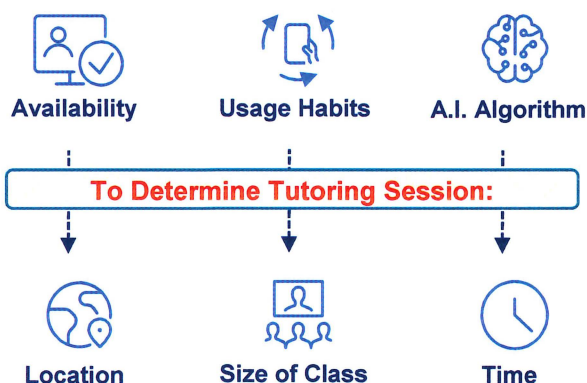
## Session Monitoring and Optimization

A dedicated team continually optimizes sessions and maximizes tutor effectiveness.

## Tutoring Sessions Available

- Before school
- During school
  - With options to integrate into flex scheduling and study halls
- After school
- Evenings
- Weekends

Together, the OKIN team and your district will work to customize your session schedule based on student and classroom needs.



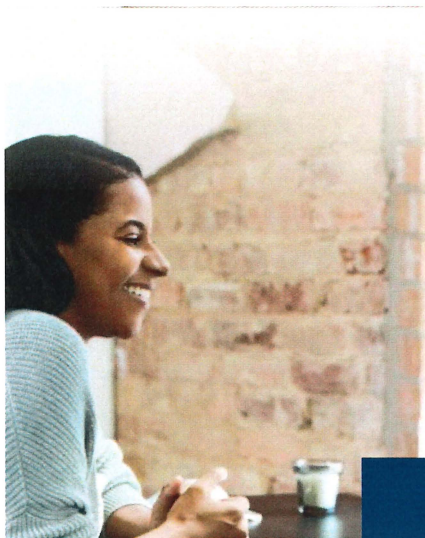
## Tracking Student Progress

Testing and assessments support an adaptive approach.

Continual assessment of tutors and students allow us to set the baseline to assign students to the right tutoring session. Then, iterative testing allows us to understand student comprehension before, during, and post tutoring sessions.

At the end of a tutoring course, there will also be a final assessment to help evaluate the overall impact of the tutoring program.





# Seeking Qualified Educators for the Homework Helpline!

**Part-time Tutor Positions Open Now!**

**Be the touchpoint to success for your students!**



Leverage your areas of expertise to help students individually and in small groups

Get started on becoming a tutor today by contacting our instructional team!



Remote, just-in-time tutoring for students, right when they need it



Flexible hours! Schedule the tutoring time that works for you

Kelly Mokashi - Instructional Manager



[kelly.mokashi@okineducate.com](mailto:kelly.mokashi@okineducate.com)



908-812-8919

Jennifer McGregor – Instructional Supervisor



[jennifer.mcgregor@okinprocess.com](mailto:jennifer.mcgregor@okinprocess.com)



770-380-3962

## Who are we?

OKIN Process is a company focused on making learning better for students. We provide unbridled access to on-demand tutoring, so students have the opportunity to learn when inspiration strikes, when curiosity calls, or when they just get stuck. We partner with schools and districts across the country to help raise the next generation of connected learners to a new level.

## Company Culture

We have a fun and fast-paced work environment and our team thrives on creativity and excitement! At OKIN Process, we engage learning communities with innovative ways to support students. By joining our team, you can promote collaboration, and share educational resources and ideas. Tech support and hands-on training for e-learning are always available to equip you with everything you need as a tutor!

## Who We're Looking For:

- Retired teachers
- Certified teachers
- Substitute teachers
- Classroom aides
- Parent volunteers
- Teacher education candidates



**In addition to these individuals, we are looking for others who are as passionate as we are about helping students succeed!**