



# EASTSIDE ACADEMY OF LEADERSHIP & INNOVATION



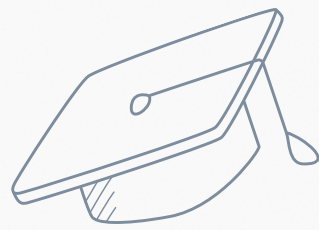


# EXECUTIVE SUMMARY

- Proposes transitioning Eastside Elementary from a PreK-5 to a Pre K-8 school model
- Implements a phased grade-level expansion:
- Grade 6 added in 2026-2027
- Grade 7 added in 2027-2028
- Grade 8 added in 2028-2029
- Allows for deliberate planning around staffing, curriculum development, and facility readiness
- Ensures continuity of high-quality instruction across all grade levels
- Emphasizes college and career readiness in the middle grades
- Integrates career exploration, leadership development, and experiential learning
- Aligns Career and Technical Education (CTE) pathways with FLDOE frameworks
- Creates a seamless, developmentally appropriate transition from elementary to middle grades
- Expands opportunities for academic rigor, career awareness, and leadership growth



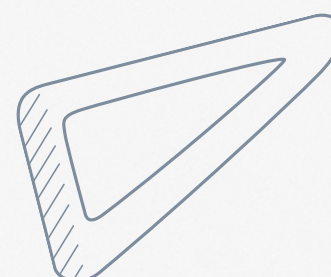
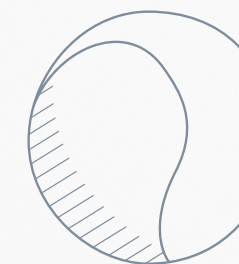




# RATIONALE FOR TRANSITION TO A PRE K-8 MODEL

Transitioning Eastside Elementary School to a PreK-8 campus offers several strategic advantages:

- Continuity of Instruction and Culture: Students benefit from consistent expectations, instructional approaches, and relationships during critical developmental years.
- Improved Academic Outcomes: Research supports PreK-8 models as effective in reducing transition-related learning loss and improving student engagement.
- Enhanced College and Career Readiness: Introducing structured career exploration and CTE experiences earlier allows students to make informed decisions prior to high school.
- Family and Community Stability: Families remain within one school community for a longer period, strengthening partnerships and engagement.



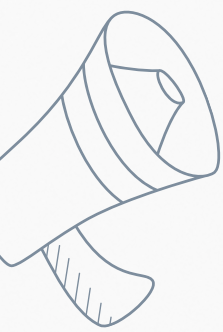
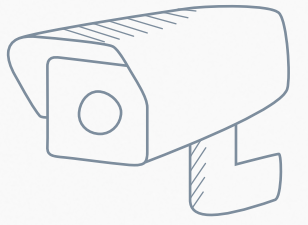
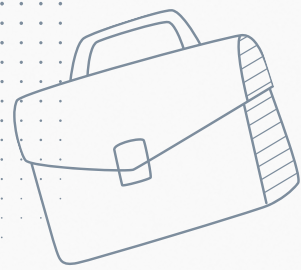


# WHY EASTSIDE ACADEMY OF LEADERSHIP AND INNOVATION?

- Eastside Academy of Leadership & Innovation is a school of choice that provides students with authentic learning experiences through hands-on instruction and purposeful field experiences
- More than a school, we will be a launchpad for future-ready learners
  - Purpose-built pathways rarely found at the elementary level
  - Real-world learning experiences that mirror middle & high school expectations
  - A strong bridge between curiosity today and career readiness tomorrow







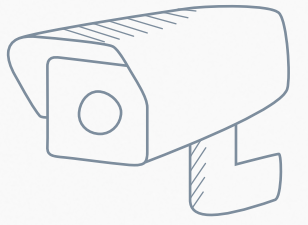
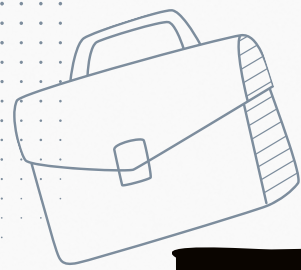
# LEADERSHIP & CAREER READINESS SCHOOLWIDE FOCUS

Developing confident leaders from day one: Instruction supports leadership development and early career readiness through meaningful roles and applied learning.

- Student leadership roles embedded across grade levels
- Career exploration through project-based learning and simulations
- Collaboration, communication, and problem-solving as daily practice
- Students learn to lead themselves, lead others, and lead ideas







# AGRISCIENCE TECHNOLOGY

Hands on Learning rooted in real world science: Students apply scientific concepts through authentic investigations and experiences that connect classroom learning to real-world applications.

- Gardening, sustainability, and food systems integrated into instruction
- STEM concepts taught through agriculture-based investigations
- Environmental responsibility and stewardship developed early
- Connects science, math, and leadership through authentic experiences





# SPACE FLORIDA (TECHNOLOGIES) PATHWAYS

Inspiring the next generation of innovators:  
Students explore innovation through hands-on STEM experiences connected to Florida's aerospace and space science industries.

- Introduction to aviation, space, and aerospace engineering concepts
- Design challenges, simulations, and problem-solving activities
- Encourages curiosity, creativity, and critical thinking
- Early exposure to high-demand STEM careers

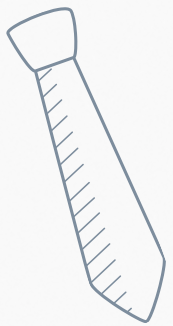




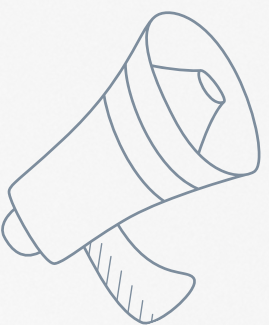



# ELEMENTARY ACADEMY FOCUS

---



To build career connections through experience, our Elementary will offer opportunities that build independence, responsibility, and collaboration through hands-on learning, including Agriscience, Aerospace, and STEM pathways, in a supportive environment that encourages:

- Real-world Agriscience & environmental learning
  - Aerospace & engineering design challenges
  - Integrated STEM projects that encourage critical thinking and problem-solving
  - Leadership, accountability, and student voice
- 
- 





# HCSD STRATEGIC PLAN ALIGNMENT

## Student Success (Priority 1)

Hands-on, real-world learning experiences support academic growth, leadership development, and early career readiness for all students.

## Talent Management (Priority 2)

Innovative instructional pathways empower educators to collaborate, grow professionally, and deliver engaging, future-focused instruction.

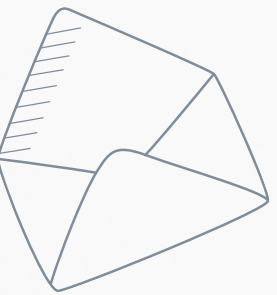
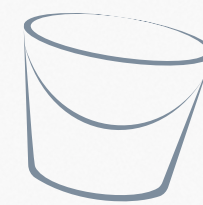
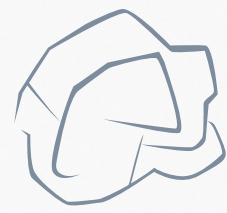
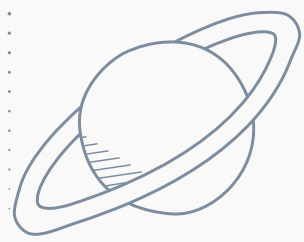
## Safe & Healthy Learning Environment (Priority 3)

Engaging, student-centered learning environments promote belonging, responsibility, and positive school culture.

## Community Connection & Responsible Stewardship (Priorities 4 & 5)

Partnerships, purposeful field experiences, and thoughtful use of resources strengthen community ties while supporting long-term planning and fiscal responsibility.



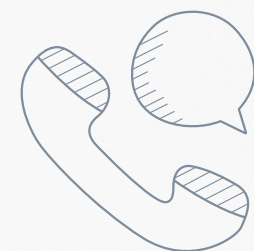
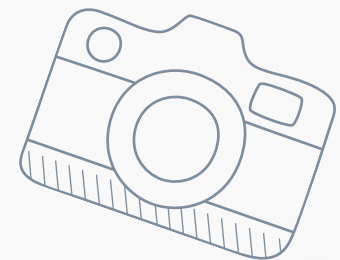


# PHASED IMPLEMENTATION PLAN



## YEAR 1: 2026-2027

- Add Grade 6 (880 total students)
- Hire middle-grades certified teachers as needed
- Launch College and Career Readiness curriculum and initial CTE offerings
- Begin quarterly field experiences aligned to electives and CTE programs

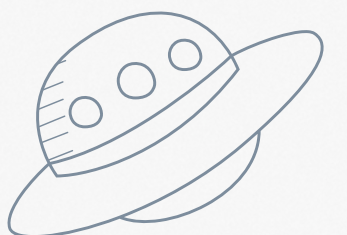
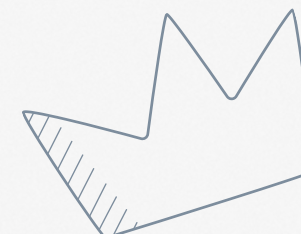


## YEAR 2: 2027-2028

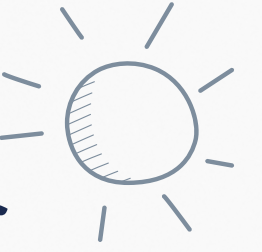
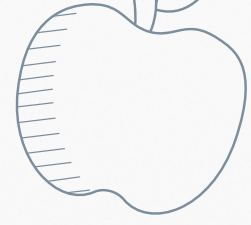
- Add Grade 7 (980 total students)
- Expand CTE pathways and community partnerships
- Continue curriculum refinement and program evaluation
- Field experiences more specific to CTE Pathways chosen.

## YEAR 3: 2028-2029

- Add Grade 8 (1080 total students- 1,200 capacity)
- Fully implement PreK-8 model
- Align middle school outcomes with high school academies and pathways
- Field experiences to focus on high school pathways and career options.







# OUTCOMES & IMPACT



- Stronger middle school readiness
- Career-aware students before high school
- Expanded opportunities without changing school identity
- Students are leaders not only in the school but in the community

