



# HERNANDO SCHOOL DISTRICT

---

Brian Ragan, Director of Facilities & Construction

Hernando County School Addition Updates

April 22, 2026



# PROPOSED SCHOOL EXPANSIONS Phase 1



# WINDING WATERS-WEEKI WACHEE HIGH FLEX SPACE BUILDING

- Building designed to be shared between WWHS & WWK8 as recommended by Planning & Growth Management Committee
- 30 Classrooms total with 13 ground floor classrooms for use by middle school and 17 second story classrooms for use by high school. Adds 660 to 750 Student Stations
- Ground floor to have an indoor & outdoor dining area with servery for food delivered from high school



- Operable walls in select rooms for co-teaching
- Ceramic tile, cement board or concrete wall finish in high abuse areas
- No wax LVT flooring in lieu of VCT



# WINDING WATERS-WEEKI WACHEE HIGH FLEX SPACE BUILDING

- 43,698 SF (approximate) excluding covered walkways
- \$21,643,822 Guaranteed Maximum Price including FF&E
- Substantial Completion Date May 31, 2026

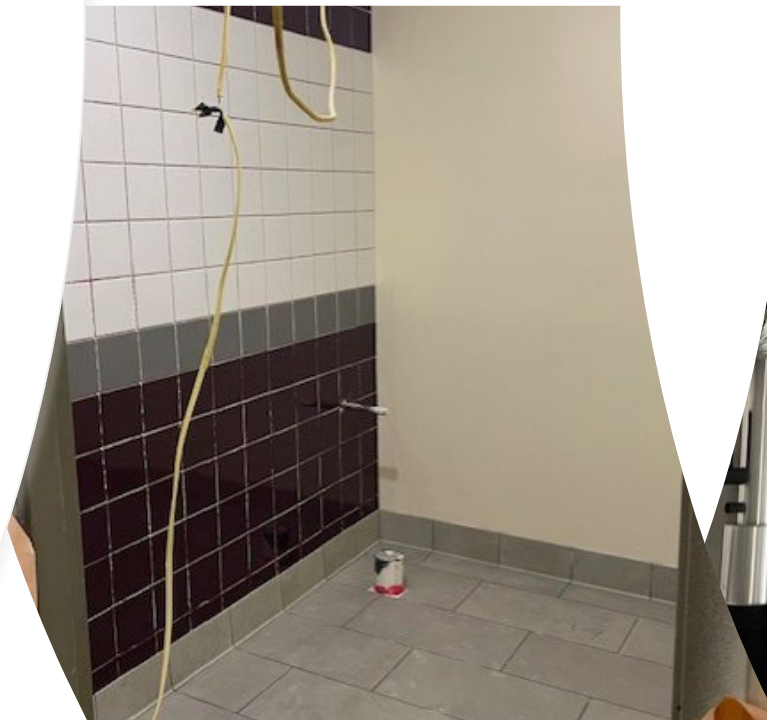
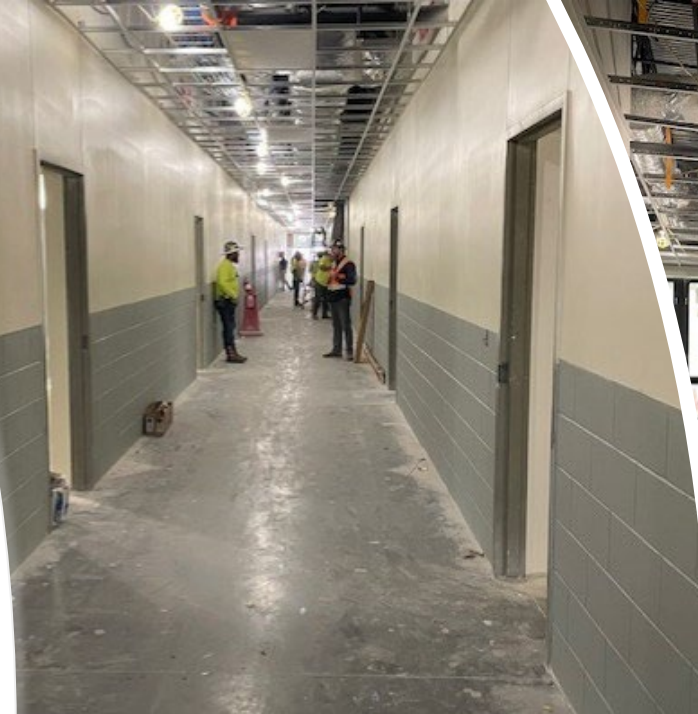


# EASTSIDE ELEMENTARY CLASSROOM & CAFETERIA BUILDINGS

- Cafeteria building to replace existing cafeteria which will become the front office.
- 20 Classrooms total with 10 classrooms per floor each having a restroom per SREF. Adds 440 Student Stations
- Cafeteria building to be constructed to meet EHPA requirements and can serve as a shelter for residents on the East side of the County
- New covered pavilion & courts



- CMU, cement board or tile at all high abuse areas
- No wax LVT floors in classrooms & corridors. Quarry tile in kitchen areas
- CMU with tile in bathrooms
- Existing freezer/cooler unit relocated to save approximately \$100,000



# EASTSIDE ELEMENTARY CLASSROOM & CAFETERIA BUILDINGS

- 26,864 SF Classroom Building 13,510 SF Cafeteria Building
- \$27,080,043 Guaranteed Maximum Price including FF&E
- Substantial Completion Date Cafeteria – June 1, 2026 Classroom July 1, 2026



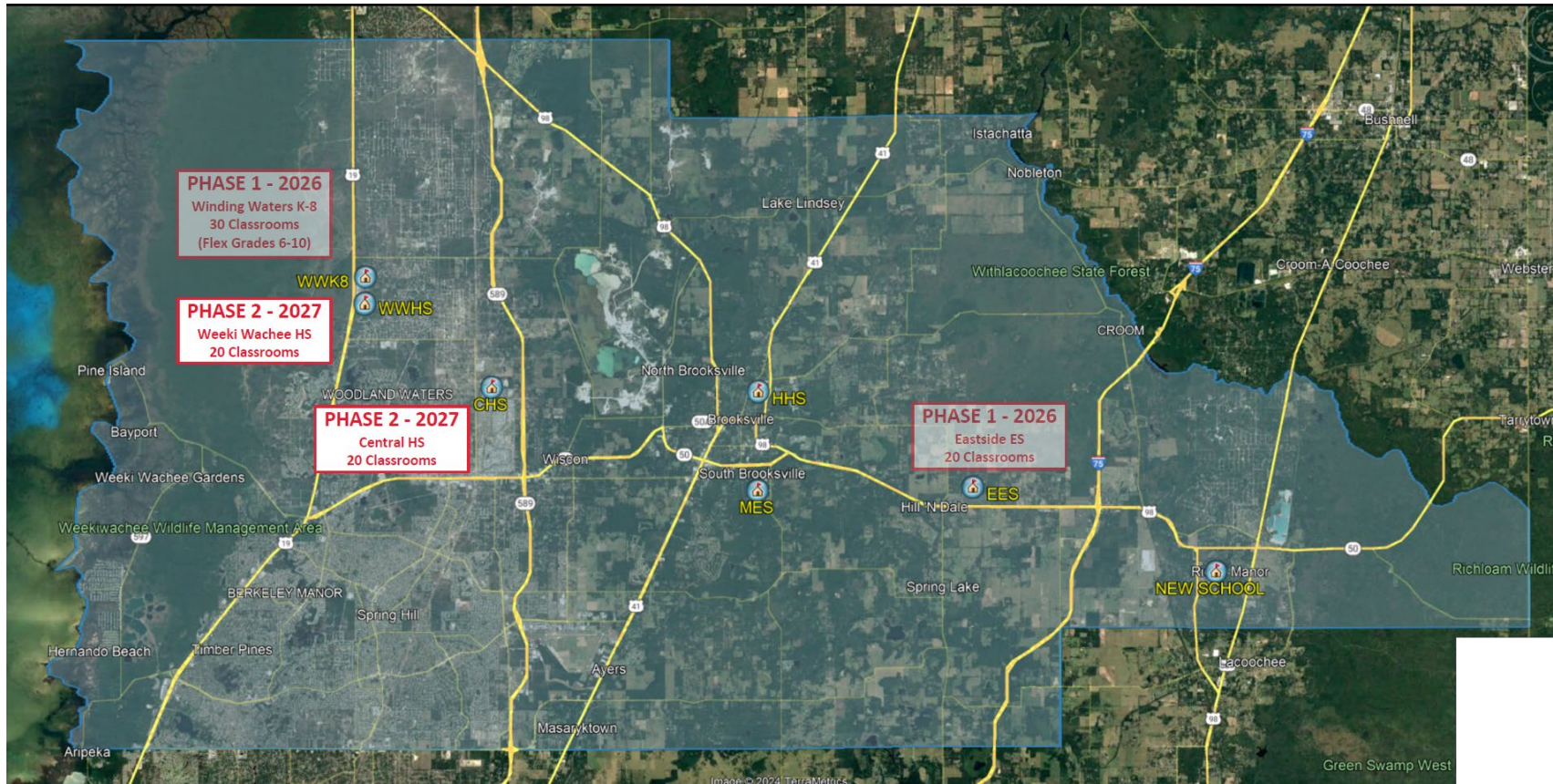
# EASTSIDE ELEMENTARY BUILDINGS 4 & 6 REMODELING

- Existing Cafeteria Building will become the new Office right sized to meet new campus capacity including clinic
- Existing Office area will be remodeled into 4 primary classrooms and an ESE suite (Approximately 72 Student Stations)
- Also includes new roofing & HVAC systems in specified areas





# PROPOSED SCHOOL EXPANSIONS Phase 2 (Original)



**ON HOLD PER BOARD DIRECTION**



**HERNANDO**  
**SCHOOL DISTRICT**

---

Learn it. Love it. Live it.