



Expansion of Canvas Learning Management System (LMS) for Hernando Schools





Agenda

- What is Canvas Learning Management System (LMS)
- Why Hernando Schools need Canvas
- Where Canvas is used in Florida
- How Canvas will be Implemented



Canvas Learning Management System



The hub of your digital classroom that serves as the foundation for teaching and learning.



Connection between administrators, teachers, students, and families, wherever learning happens.



Actionable data and insights along side district edtech tools, curriculum, and teacher built items together.



Hernando County Schools Using Canvas

Facilitates Time Management for Teachers & Supports One to One Laptop Initiative

Creates Uniformity Across Schools & Integrates with HSD
Instructional Technology & Curriculum

(Skyward, ClassLink, Savvas, Nearpod, Microsoft 365, Laptops)

Enhances Academic Transparency by Facilitating Parent
Access to Students' Assignments, Feedback, and Learning
Progress



Florida Districts Using Canvas LMS



Alachua County

Bay County

Brevard County

Broward County

Citrus County

Collier County

Dixie County

Duval County

Escambia County

Gadsden County

Gilchrist County

Hernando County

Hillsborough County

Holmes County

Indian River County

Jackson County

Leon County

Levy County

Liberty County

Madison County

Monroe County

Okaloosa County

Orange County

Osceola County

Palm Beach County

Pasco County

Pinellas County

Santa Rosa County

Seminole County

St. Lucie County

Sumter County

Suwannee County

Taylor County

Volusia County

Wakulla County

Over **1.5 Million** K12 Students in Florida



Implementation Timeline

DATA PROVISIONING

Getting your data in and out of Canvas.



AUTHENTICATION

How your students and teachers will log into Canvas.



BRANDING

Make your Canvas instance feel like part of your institution.



CONTENT MANAGEMENT

Creating course content from scratch or through various templated and import methods.



TRAINING

Learn everything Canvas for your Admins and Teachers.



SUPPORT

Setting up support so your teachers and students can get help.



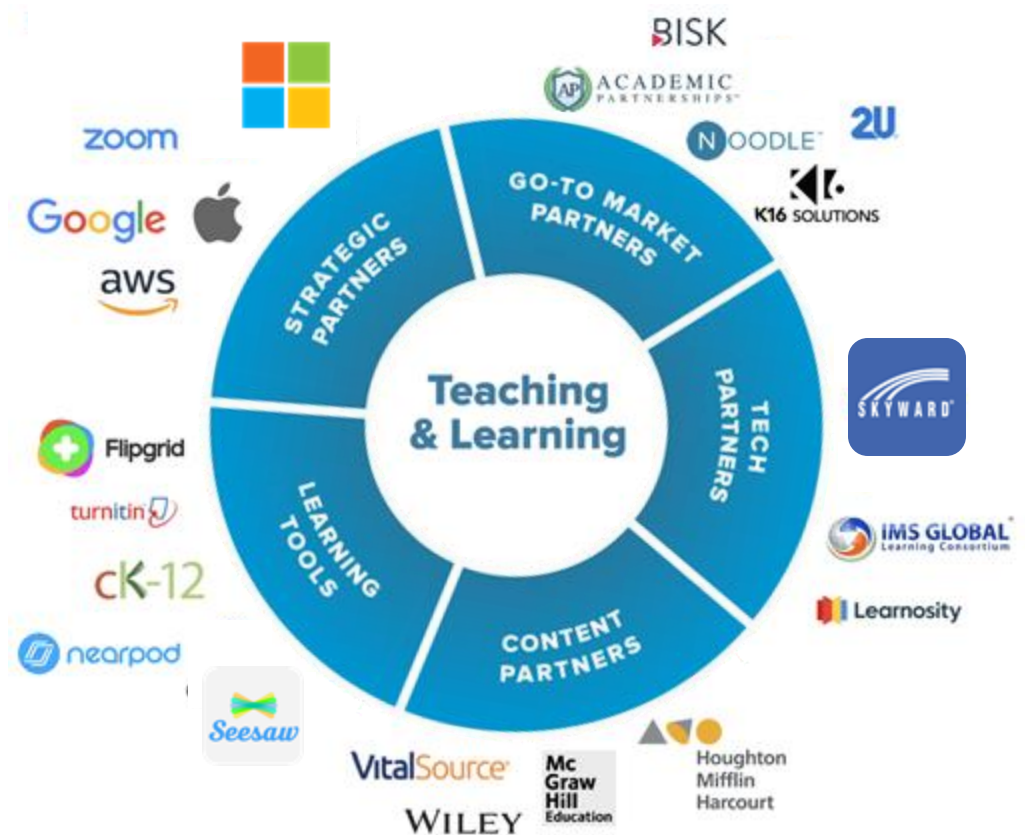


Quick Facts

- **Born in the cloud and 100% AWS native; 99.99% uptime**
- **Used in all 50 states**
- **21 state-wide deployments**
- **1.8 million actively contributing community members**
- **Tens of millions of users globally**
- **Device Agnostic - Learn using anything with a web browser**

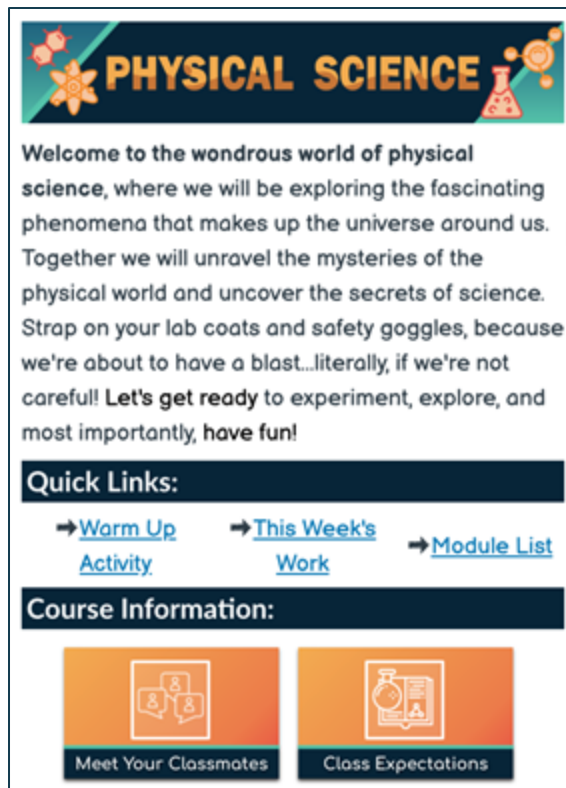


Supports an Ecosystem of EdTech Partners

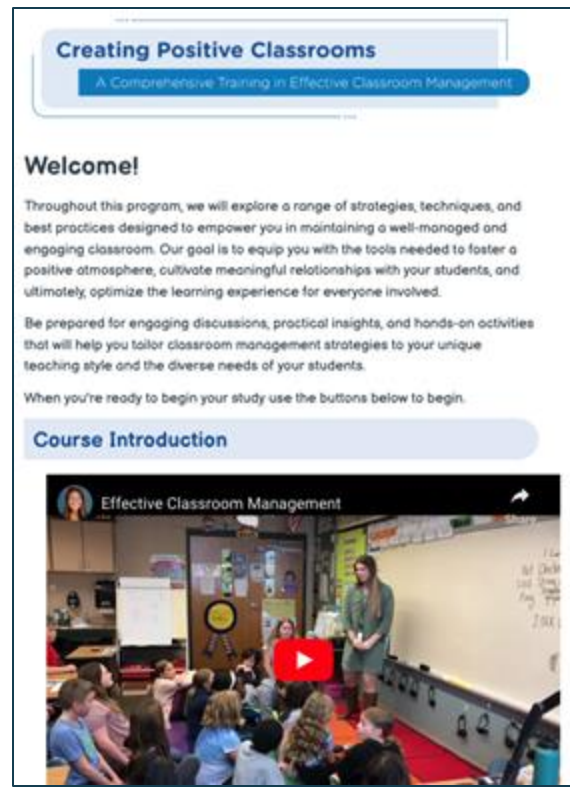




Elementary



Secondary



Professional Development



Instructure's Commitment to Accessibility

Instructure is committed to ensuring its products are inclusive and meet the diverse accessibility needs of our users

- [Canvas Voluntary Product Accessibility Template \(VPAT\)](#)

- Accessibility Checker
- Keyboard Shortcuts
- “Move to” Lists
- High Contrast View

- Screen Readers and Browsers
- Immersive Reader
- Canvas Language Options

[View the full list of Canvas Accessibility Standards](#)



Mobile Apps to Support Learning



Canvas Student

Instructure Inc.

★★★★★ 4.7 • 2.3M Ratings



Canvas Teacher

Mobile teaching companion

★★★★★ 4.6 • 82.2K Ratings



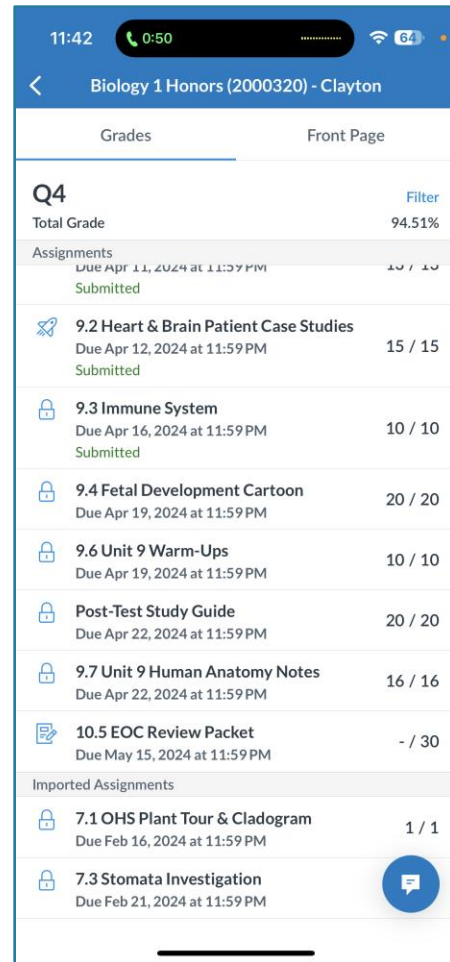
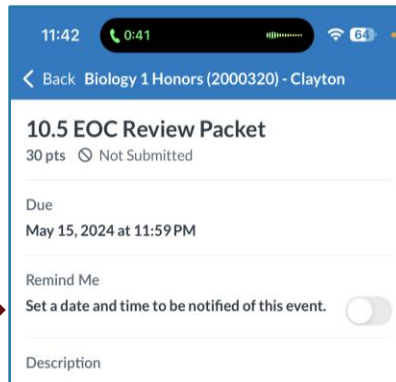
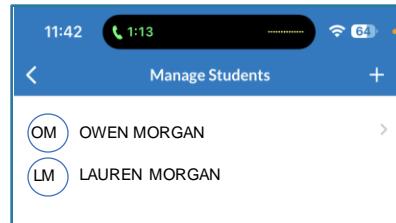
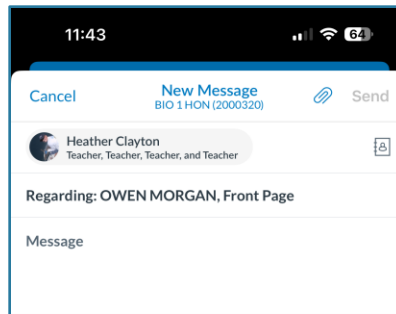
Canvas Parent

Instructure Inc.

★★★★★ 4.3 • 90.7K Ratings

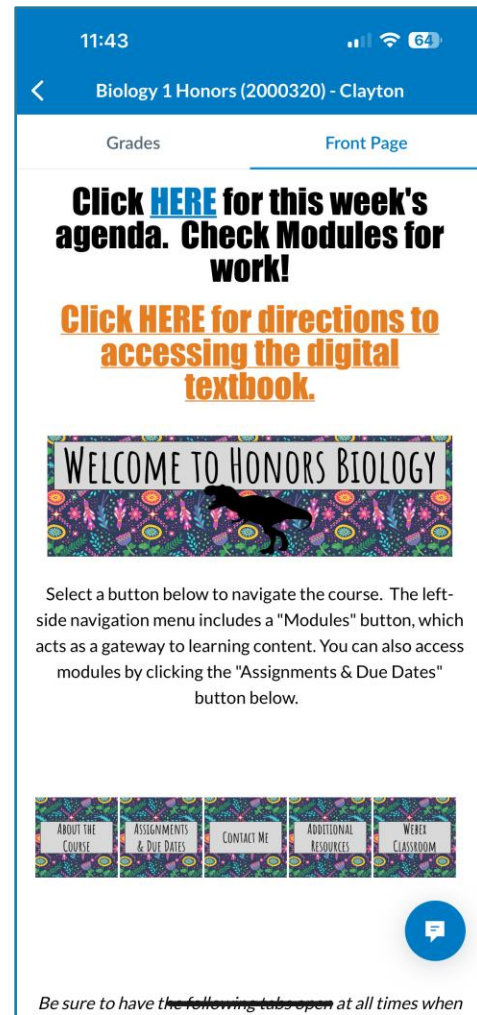
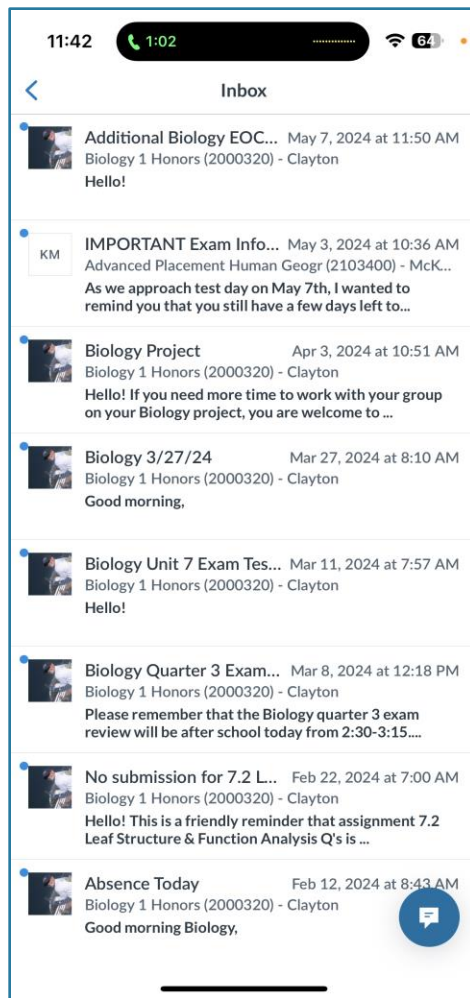


Enhanced Parental Access to Students' Learning Progress & Experiences





Enhanced Parental Access to Students' Learning Progress & Experiences





Enhanced Parental Access to Students' Learning Progress & Experiences

Experiment Approval Assignment Submission

Due: Fri Jul 7, 2023 11:59pm

83/100 Points

Attempt 1



Review Feedback

SUBMITTED: Mar 18, 2022 9:36am

Attempt 1 Score:

83/100



View Feedback

Anonymous Grading: no

Developing Investigations (4)

Criteria	Ratings				Pts
Hypothesis view longer description	25 to >18.75 pts Excellent: Hypotheses match the overall question; Hypotheses are stated correctly.	18.75 to >9.38 pts Good: Hypothesis match the overall question. A hypothesis is phrased incorrectly.	9.38 to >6.25 pts Fair: Hypotheses match the overall question but are incorrect or contradictory.	6.25 to >0 pts Poor: Hypotheses do not match the overall question and are stated incorrectly.	25 / 25 pts
Design view longer description	50 to >37.5 pts Excellent: The experiment matches the question and hypotheses; the methods will lead to meaningful results; no missing information.	37.5 to >25 pts Good: One or two minor flaws in the design; one or two pieces of information missing; part of methods unclear.	25 to >12.5 pts Fair: The experiment does not address the overall question or the hypotheses; two or more parts unclear.	12.5 to >0 pts Poor: Major flaw in the design – results will not be meaningful;	48 / 50 pts
Creativity view longer description	25 to >12.5 pts Excellent: The overall question or methods are novel; the results will yield new information.				

Page < 1 > of 2 | — ZOOM + | ↗ | 🔍 | ✎ | T | ⌂ | ↶ | ↷

Example Student Assignment

The standard Lorem Ipsum passage, used since the 1500s

"Lorem ipsum dolor sit amet, consectetur adipiscing elit, sed do eiusmod tempor incididunt ut labore et dolore magna aliqua. Ut enim ad minim veniam, quis nostrud exercitation ullamco laboris nisi ut aliquip ex ea commodo consequat. Duis aute irure dolor in reprehenderit in voluptate velit esse cillum dolore eu fugiat nulla pariatur. Excepteur sint occaecat cupidatat non proident, sunt in culpa qui officia deserunt mollit anim id est laborum."

Section 1.10.32 of "de Finibus Bonorum et Malorum", written by Cicero in 45 BC

"Sed ut perspiciatis unde omnis iste natus error sit voluptatem accusantium doloremque laudantium, totam rem aperiam, eaque ipsa quae ab illo inventore veritatis et quasi architecto beatae vitae dicta sunt explicabo. Nemo enim ipsam voluptatem quia voluptas sit aspernatur aut odit aut fugit, sed quia consequuntur magni dolores eos qui ratione voluptatem sequi nesciunt. Neque porro quisquam est, qui dolorem ipsum quia dolor sit amet, consectetur, adipisci velit, sed quia non numquam eius modi tempora incidunt ut labore et dolore magnam aliquam quaerat voluptatem. Ut enim ad minima veniam, quis nostrum exercitationem ullam corporis suscipit laboriosam, nisi ut aliquid ex ea commodi consequatur? Quis autem vel eum iure reprehenderit

Mrs. Clayton
Great leading paragraph, it really caught my attention!

Mrs. Clayton
Please make sure this is proper APA formatting.

Mrs. Clayton
This is confusing, make sure you're explaining the thought behind this.

Mrs. Clayton
transpose these elements



Ensuring District Success

Customer Success Manager

Your Canvas advocate & liaison who fosters the relationship, encourages adoption, ensures retention and manages the account

Project Consultant

Point of contact during implementation who provides onboarding guidance and best practices, facilitates account configuration, authentication, SIS integration, and content migration.

Technical Consultant

Behind-the-scenes technical expert who assists the PC with complex implementation tasks and advises them regarding technical Canvas functions and features



Tools That Make Expanding Canvas LMS in HSD a Smart Educational Investment

Skyward Grade Passback

With the click of a button, teachers can pass all grades within Canvas to the district's gradebook of record.

District EdTech Tools

Make it easy for students and teachers to use district approved edtech tools right with in Canvas.

The K5 Experience

A simple user interface to improve the experience for our youngest learners.

SpeedGrader

View and grade student assignment submissions in one place using a simple point scale or complex rubric.

Highest-Rated Mobile Apps

Allow stakeholders to access Canvas on the go with our mobile apps.

Mastery Paths

Automatically differentiate learning for students based on their performance and needs.

Course Templates

Templated courses can be created to make it easy for teachers to get started building course content.

BluePrints

Create content and push it out to associated courses and allow teachers ability to customize.



Day to Day Instructure Support

24/7/365 Tier 1 Support

In-house support from Instructure employees

Phone

5 Minute Guaranteed Response Time

Live Chat

5 Minute Guaranteed Response Time

Email/Ticket

2 Hour Guaranteed Response Time



Testimonials