

Academic Services Reorg

22-23 Summary of Changes

- Revise job title Coordinator of Program Evaluation to **Supervisor of Data Informed Supports**
- Adjust funding for Supervisor of Data Informed Supports position from 80% Title I, Part A, 20% General Fund to 100% General Fund
 - Note: this position will supervise the ESSA Specialists
- **Add new position:** Executive Secretary for Executive Director of Student Support Services
- Revise job title from Supervisor of Elementary Curriculum to **Director of Elementary Curriculum**
- Revise job title from Supervisor Secondary Curriculum to **Director of Secondary Curriculum**
- Revise job title from Coordinator of ESE to **Supervisor of ESE**
- **Add new position:** Supervisor of Literacy Interventions and Elementary Academic Programs
 - Note: This person will be overseeing the media specialists at the district, the Early Learning Specialist and the Coordinator of MTSS

23-24 Summary of Changes

- **Add new position:** Supervisor of State Reporting
 - Note: Coordinator of Student Data Quality Reporting and staff will be supervised by the Supervisor of State Reporting. That Supervisor and staff will report to the Director of TIS.
- Adjust funding for Teacher on Special Assignment for ESSA from 100% Title I Part A, to 90% Title I Part A and 10% General Fund in order to work with non-Title I schools

Academic Services Proposed Reorganization 2022-23

		Current		Proposed		Salary difference including benefits and fringes
Current Position	Proposed Position	Salary	Salary, Benefits and Fringes	Salary	Salary, Benefits and Fringes	
Coordinator of Program Evaluation	Supervisor of Data Informed Supports	\$13,269.59	\$17,351.76	\$72,310.00	\$93,958.56	\$76,606.80
NA	Executive Secretary	\$0.00	\$0.00	\$32,768.40	\$46,208.12	\$46,208.12
Supervisor of Elementary Programs	Director of Elementary Programs	\$73,786.83	\$95,741.98	\$89,360.50	\$114,548.74	\$18,806.76
Supervisor of Secondary Programs	Director of Secondary Programs	\$72,962.85	\$94,746.94	\$89,360.50	\$114,548.74	\$19,801.80
Coordinator of ESE	Supervisor of ESE	\$68,086.96	\$88,858.81	\$73,305.60	\$95,160.84	\$6,302.03
NA	Supervisor of Literacy Intervention Programs and Elementary Academic Programs	\$0.00	\$0.00	\$72,310.00	\$99,958.56	\$99,958.56

Executive Secretary salary calculated at year 10 with a degree.

Director salary calculated based on the average of the salary range.

Fringes calculated at 20.76% plus \$6637 for benefits.

Total Cost of Proposed Change			\$267,684.07
--------------------------------------	--	--	---------------------

Academic Services Proposed Reorganization 2023-24

		Current		Proposed		Salary difference including benefits and fringes
Current Position	Proposed Position	Salary	Salary, Benefits and Fringes	Salary	Salary, Benefits and Fringes	
	Supervisor of State Reporting	\$0.00	\$0.00	\$78,285.60	\$101,174.69	\$101,174.69
Teacher on Special Assignment ESSA Title I	Teacher on Special Assignment ESSA 10%	\$0.00	\$0.00	\$5,710.00	\$7,559.10	\$7,559.10
Teacher on Special Assignment ESSA Title I	Teacher on Special Assignment ESSA 10%	\$0.00	\$0.00	\$5,355.00	\$7,130.40	\$7,130.40

Supervisor salary calculated at year 10.

Fringes calculated at 20.76% plus \$6637 for benefits.

Total Cost of Proposed Change			\$115,864.19
--------------------------------------	--	--	---------------------

**22-23 Division of
Teaching and**

Gina Michalicka
Assistant Superintendent of Teaching and Learning

Gloria Jedinak
Executive Secretary

Tracy Ketchum
T & L Bookkeeper

Michelle Barash
Director of Elementary
Curriculum

TBA
Supervisor of Literacy,
Intervention and
Elementary Academic

John Morris
Director of Secondary
Curriculum

Beth Lastra
Supervisor of College
and Career Programs

Sophia Watson
Director of Adult &
Technical Education

TBA
Supervisor of
Instructional Technology

Linda Peirce
Supervisor of Assessment
and Accountability

Sonsee Sanders
Supervisor of Data
Informed Supports

Jodi Grinnen - Secretary

Kristal Rickard-Barnes
TBA
Michelle Rittenberry
Diane Welch
Elementary Reading Coaches

TBA
5 Media Specialists

Carrie DeNote K-5
Elizabeth Abel K-5
Andrew Johnson 6-8
Stephany Syblis 6-8

Math Coaches

Danyl Williams K-8
Melissa Wilkerson 5-12
TBA 5-12
College & Career
Specialists

Kara Trowell
Programs Manager

Lisa Guerin
Mathematics
Specialist 9-12

Nicole Blair
Staff Assistant

Martha Ann Zopf
Middle School Reading
Coach

Carrie Labarge
Early Learning Specialist

Erin Brownell
STEM 6-8

Maria McNeil
Katie Viola
Computer Lab Mgrs

Tiffany Howard
High School Reading Coach

Kerri Littlefield
Coordinator of MTSS

TBA
Reading Coach

Ruth Markham
Elementary STEM Coach

Cheryl Paradis
SCEC Administrator

Nicola Barlow
Manager of Career
Enhancement

TBA
Instructional Tech

Jessie Jones
Assessment Assistant

Michelle Barnes
Darla Croft
ESSA Specialists

Danielle Ford
Secretary

TBA
Instructional Tech

Michele DiLuzio
Data Quality & Integrity
Specialist

TBA
Bookkeeper

TBA
Instructional Tech

Donna Reilly
Coordinator of Student Data
Quality Reporting

Alexis Muniz-Coleman
Data Entry

Catherine Coker
Financial Aid Coordinator

Rachel Bartilucci
LoisAnn Galarneau
Rhonda Jewell
Data Quality Assistant

Aisha Bligen
Workforce Devp Specialist

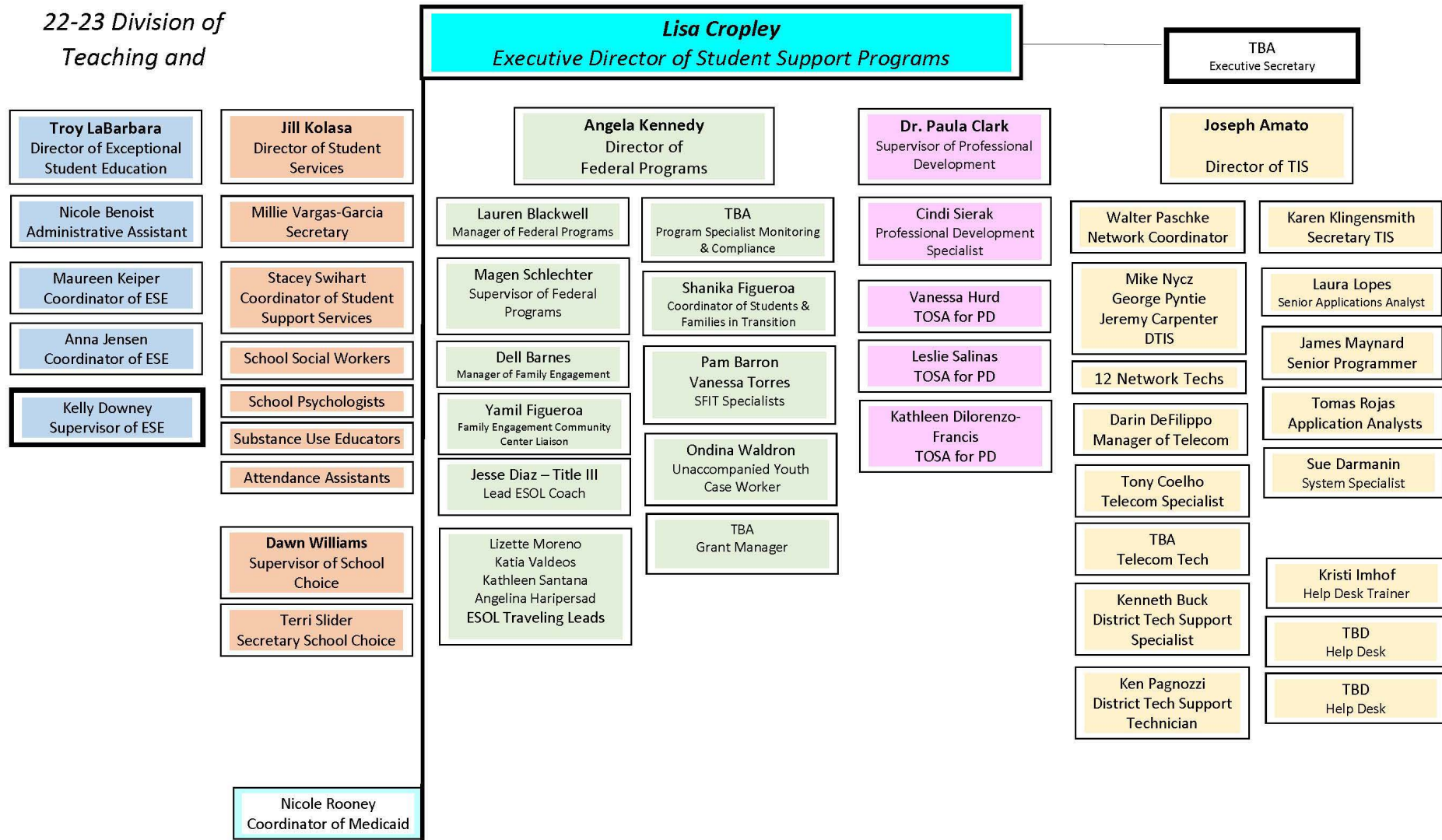
Miriam Gomez
Doris Tejada
Jackie Torres
Adult Literacy Specialists

Wendy Beard
Coordinator of Pathway
Success Academy

38 instructional positions

Principals

22-23 Division of
Teaching and



**23-24 Division of
Teaching and**

Gina Michalicka
Assistant Superintendent of Teaching and Learning

Gloria Jedinak
Executive Secretary

Tracy Ketchum
T & L Bookkeeper

Michelle Barash
Director of Elementary
Curriculum

TBA
Supervisor of Literacy,
Intervention and Elementary
Academic Programs

John Morris
Director of Secondary
Curriculum

Beth Lastra
Supervisor of College
and Career Programs

Sophia Watson
Director of Adult &
Technical Education

TBA
Supervisor of Instructional
Technology

Linda Peirce
Supervisor of Assessment
and Accountability

Sonsee Sanders
Supervisor of Data
Informed Supports

Jodi Grinnen - Secretary

Kristal Rickard-Barnes
TBA
Michelle Rittenberry
Diane Welch
Elementary Reading
Coaches

TBA
5 Media Specialists

Carrie DeNote K-5
Elizabeth Abel K-5
Andrew Johnson 6-8
Stephany Syblis 6-8
Math Coaches

Danyl Williams K-8
Melissa Wilkerson 5-12
TBA 5-12
College & Career
Specialists

Nicola Barlow
Manager of Career
Enhancement

TBA
Instructional Tech

Jessie Jones
Assessment Assistant

Michelle Barnes
Darla Croft
ESSA Specialists

Danielle Ford
Secretary

TBA
Instructional Tech

TBA
Bookkeeper

TBA
Instructional Tech

Alexis Muniz-Coleman
Data Entry

Martha Ann Zopf
Middle School Reading
Coach

Carrie Labarge
Early Learning Specialist

Lisa Guerin
Mathematics
Specialist 9-12

Kara Trowell
Programs Manager

Tiffany Howard
High School Reading
Coach

Kerri Littlefield
Coordinator of MTSS

Erin Brownell
STEM 6-8

Nicole Blair
Staff Assistant

Catherine Coker
Financial Aid Coordinator

TBA
Reading Coach

Maria McNeil
Katie Viola
Computer Lab Mgrs

Aisha Bligen
Workforce Devp Specialist

Ruth Markham
Elementary STEM Coach

Miriam Gomez
Doris Tejada
Jackie Torres
Adult Literacy Specialists

Cheryl Paradis
SCEC Administrator

Wendy Beard
Coordinator of Pathway Success
Academy

Principals

38 instructional positions

**23-24 Division of
Teaching and**

